

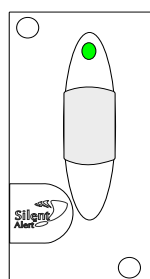
Quick start guide Mini Monitor with socket mobile phone detector



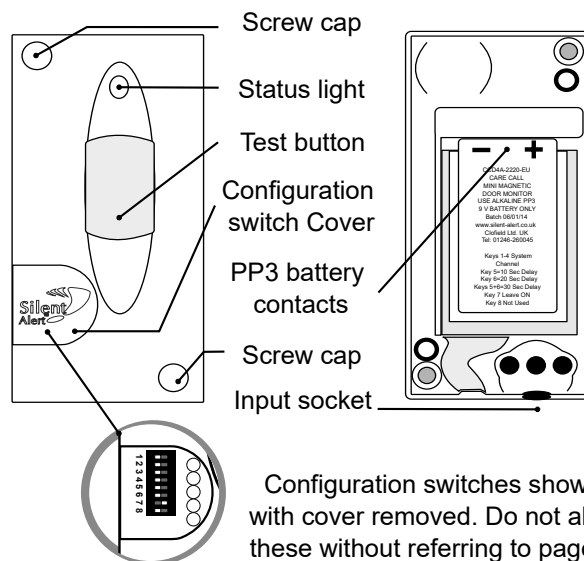
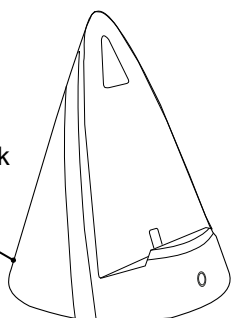
Mobile phone activation

Any questions? Call us on 01246 450789

Mini Monitor with the Ibell 2



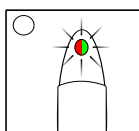
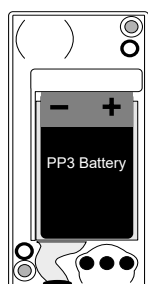
Connection jack
'AUX'



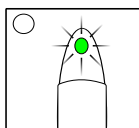
Configuration switches shown with cover removed. Do not alter these without referring to page 2

2.

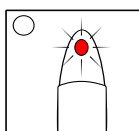
Install a 9 volt PP3 alkaline or lithium battery making sure to observe the correct polarity.



When a battery is first fitted the indicator light will flash red then green a few times then light solid green & pause briefly.



The light will then will flash green several times to show the battery voltage.
9 flashes = 9Volts in the battery.



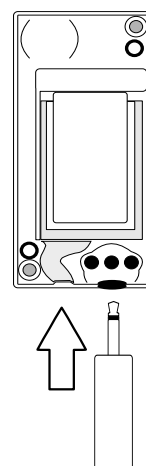
If the light flashes red at this point the battery is flat and will need to be replaced.

To repeat the battery check remove the battery, press the test button then re-insert the battery to start the sequence again.

3.

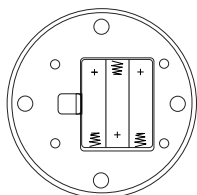
The monitor is activated using an external device that delivers a short circuit to a 3.5mm jack. Plug the 3.5mm jack into the socket.

The monitor may transmit the first time the connection is made. This is normal.



4.

Power the Ibell and connect to the monitor



Insert 3 x AA batteries into the Ibell2.

Connect the 3.5mm jack plug to the AUX socket.

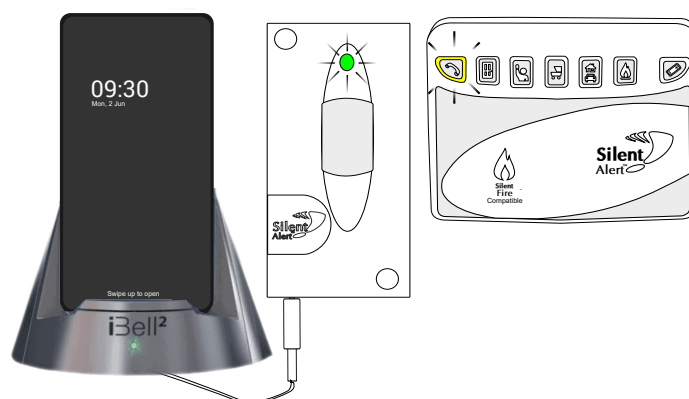
Ensure the Mobile phone is set to Vibrate on call. Place the mobile phone into the Ibell2 cradle.

WARNING

When installing the sensor make sure the cable doesn't cause a trip hazard.

5.

When you receive a call the phone will vibrate and trigger the Mini Monitor



WARNING! Your device and its accessories are not toys. They may contain small parts. Keep them out of the reach of small children.

Advanced settings MM4A-2212-EU-socket

Mini Monitor with socket



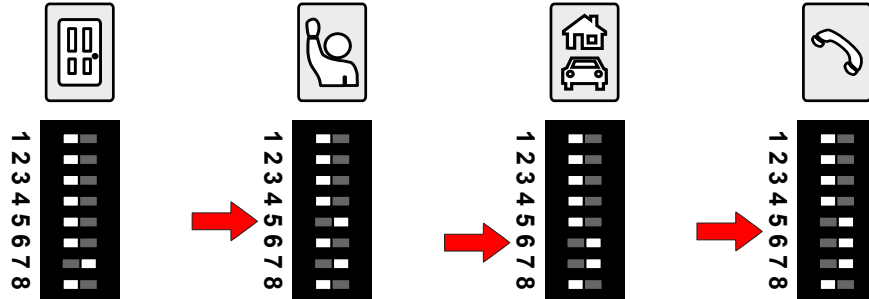
Any questions? Call us on 01246 450789

It is possible for the monitor to light up different keys on the Pager or SignWave. This allows more than one mini monitor to be used on a SA3000 system.

Move the relevant key to the right.

Press the test button and check the correct event is received by the Pager or SignWave.

Key 7 must be left on.



Changing the system channel code

NOTE. In most cases it is not necessary to change the system code. However, when one or more systems are in close proximity, system codes can be used to avoid interference from other SA3000 systems using up to a maximum of 16 channels.

The monitor is supplied with no system code switches set (system code 1).

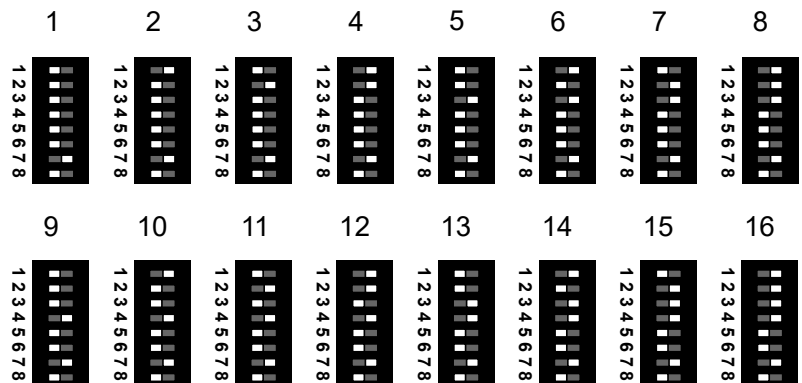
For reference this is the factory setting should you need to re-set the unit.

System codes can be set using key switches 1 - 4.

The diagram to the right shows the 16 possible combinations.

KEY 7 MUST BE LEFT ON

Be sure that the same system code is set on the receiver to be used and any other monitoring options in that system.



Do not disassemble.

Do not disassemble

Silent Alert SA3000 system

Operating Frequency: 869MHz

Output power: <10mW

Hereby, Clofield Ltd declares this radio equipment is in compliance with Directive 2014/53/EU.

The full text of the EU declaration can be found at www.silent-alert.co.uk



Do not immerse the Mini Monitor in water or any other liquid.